

Write your name here

Surname

Other names

Centre Number

Candidate Number

Edexcel GCE

Design and Technology

**Product Design: Resistant Materials Technology
Advanced Subsidiary**

Unit 2: Design and Technology in Practice

Tuesday 14 May 2013 – Morning

Time: 1 hour 30 minutes

Paper Reference

6RM02/01

You do not need any other materials.

Total Marks

Instructions

- Use **black** ink or ball-point pen.
- If pencil is used for diagrams/sketches it must be dark (HB or B). Coloured pens, pencils and highlighter pens must not be used.
- **Fill in the boxes** at the top of this page with your name, centre number and candidate number.
- Answer **all** questions.
- Answer the questions in the spaces provided
– *there may be more space than you need.*

Information

- The total mark for this paper is 70.
- The marks for **each** question are shown in brackets
– *use this as a guide as to how much time to spend on each question.*
- Questions labelled with an **asterisk** (*) are ones where the quality of your written communication will be assessed
– *you should take particular care on these questions with your spelling, punctuation and grammar, as well as the clarity of expression.*

Advice

- Read each question carefully before you start to answer it.
- Keep an eye on the time.
- Try to answer every question.
- Check your answers if you have time at the end.

Turn over ►

P39254A

©2013 Pearson Education Ltd.

1/1/1/1



PEARSON

Answer ALL the questions. Write your answers in the spaces provided.

1 Trees are classified as either hardwood or softwood.

(a) Give **one** reason why a tree is classified as a hardwood.

(1)

.....

.....

Turn to page 3 for question 1(b).



Figure 1 shows a picture of a toy made from beech.



Figure 1

(b) Explain **three** reasons why beech is a suitable material for the toy.

(6)

1

.....

.....

2

.....

.....

.....

3

.....

.....

.....



Figure 2 shows a plank of solid timber.

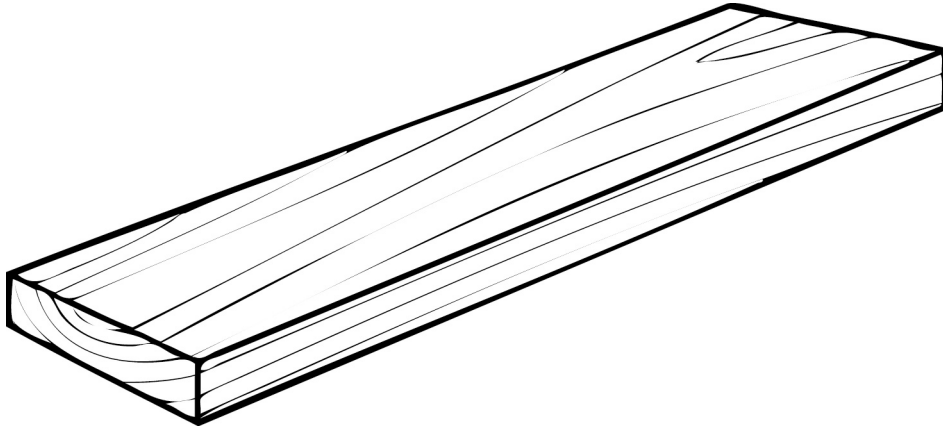


Figure 2

(c) Draw a diagram to show how the plank would 'cup' if it was not seasoned carefully.

(2)

(Total for Question 1 = 9 marks)



2 Figure 3 shows a bracket made from 10 mm thick mild steel plate with two holes drilled through it.

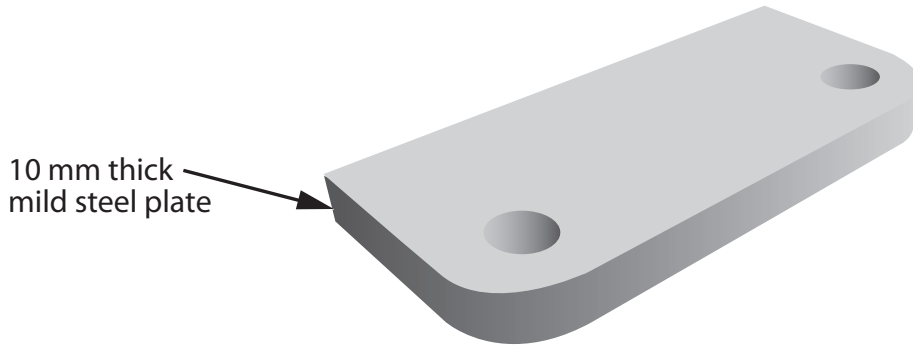


Figure 3

(a) One item of personal protective equipment (PPE) that would be worn when drilling the holes using a bench drill is a pair of goggles.

Name **three** other items of PPE that could be worn in this situation.

(3)

1

2

3

(b) Before the holes are drilled the mild steel needs to be centre punched.

State why centre punching is needed.

(1)

.....

.....

(c) Give **three** reasons why cutting fluids would be required when drilling holes in the 10 mm thick mild steel plate.

(3)

1

.....

2

.....

3

.....

(Total for Question 2 = 7 marks)



3 There is a wide range of fixing components available for joining materials together.

(a) State **one** benefit of using each of the following components:

(i) Wing nut

(1)



.....

.....

.....

(ii) Spring washer

(1)



.....

.....

.....

(b) Draw a countersunk head machine screw in the box below.

(2)



(c) Three common thread forms used in engineering are:

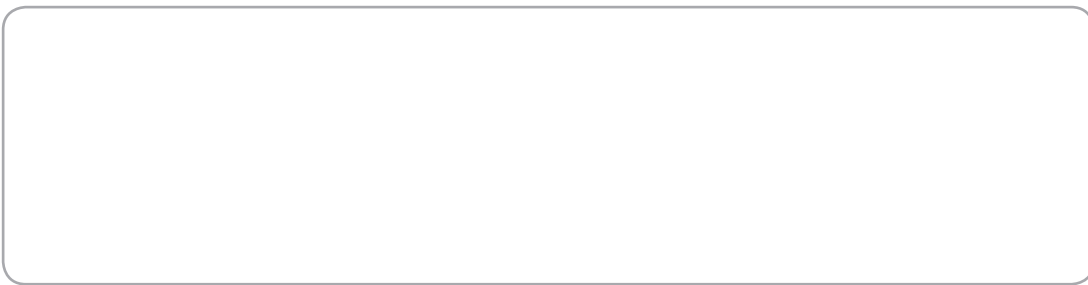
- V-thread
- Buttress thread
- Acme thread

Choose **two** of the thread forms listed above.

Draw a diagram to show the profile of each thread and give **one** working characteristic which results from its specific shape.

(2)

(i) Chosen thread form 1



Working characteristic

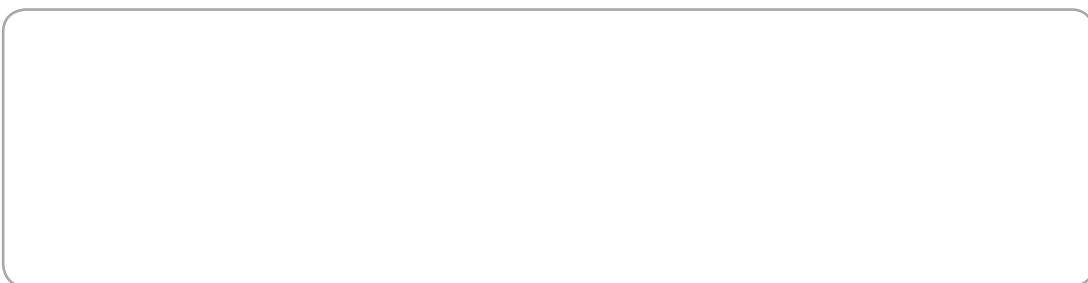
.....

.....

.....

(2)

(ii) Chosen thread form 2



Working characteristic

.....

.....

.....

(Total for Question 3 = 8 marks)



4 Figure 4 shows two views of a mains plug. The body of the plug is made from urea formaldehyde.

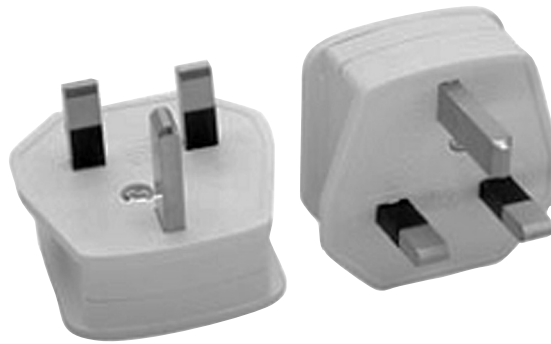


Figure 4

(a) Explain **three** reasons why urea formaldehyde is a suitable material for the body of the plug.

(6)

1

.....

.....

.....

2

.....

.....

3

.....

.....

.....



(b) Photochromic paint is a smart material.

Explain the 'smart' action of photochromic paint.

(2)

.....
.....
.....
.....

* (c) Justify the use of electroluminescent (EL) lighting over other forms of lighting.

(6)

.....
.....
.....
.....
.....
.....
.....
.....
.....
.....
.....
.....
.....
.....
.....
.....
.....
.....
.....
.....
.....
.....
.....
.....
.....

(Total for Question 4 = 14 marks)



5 Adhesives are used in a range of different situations.

(a) Name **one** adhesive used to chemically bond two pieces of acrylic together.

(1)

.....

(b) Describe the process of using PVA adhesive to join two pieces of wood.

(3)

.....

.....

.....

.....

.....

.....

.....

(c) Justify the use of hot melt glue when constructing a model out of material off-cuts.

(4)

.....

.....

.....

.....

.....

.....

.....

.....

.....

.....

.....



(d) Many adhesives contain volatile organic compounds (VOCs).

State **two** risks to health posed by adhesives that contain VOCs and identify the subsequent control measures required when using them.

(4)

Risk 1

.....
.....

Control measure

.....
.....

Risk 2

.....
.....

Control measure

.....
.....

(Total for Question 5 = 12 marks)



6 Outline the advantages of using a laser for cutting out shapes from sheet material rather than using a milling machine or router.

(4)

.....

.....

.....

.....

.....

.....

.....

.....

.....

.....

.....

.....

.....

.....

.....

.....

.....

.....

.....

.....

.....

.....

.....

.....

.....

(Total for Question 6 = 4 marks)

7 (a) There are a range of organisations that deal with safety and quality standards.
Describe the role of the International Standards Organisation (ISO).

(2)

.....

.....

.....

.....

.....

.....

.....

.....

.....

.....



* (b) Manufacturers must have quality assurance (QA) systems in place in order to ensure that customers receive quality products.

Explain the different aspects of a quality assurance system.

(6)

.....

.....

.....

.....

.....

.....

.....

.....

.....

.....

.....

.....

.....

.....

.....

.....

.....

.....

.....

.....

.....

.....

.....

(Total for Question 7 = 8 marks)



*8 Evaluate the suitability of a continuous production system for the manufacture of drinks cans.

(8)

Ruled area for writing the answer to Question 8.

(Total for Question 8 = 8 marks)

TOTAL FOR PAPER = 70 MARKS



BLANK PAGE





BLANK PAGE

